

# Expanding community placements for Pre-registration Nursing & Occupational Therapy Students within Nursing Home Settings

Ally Partington, Visiting Lecturer and Lynn Quinlivan, Practice Placement Lead, School of Health and Social Work

## BACKGROUND

Increasing the number of placement opportunities within Primary Care is required to meet both the statutory programme requirements NMC (2018 a, b, c), HCPC (2023) and NHS workforce plan (2023). Nursing Home placement opportunities for pre-registration nursing students is well established, less so for other pre-registration students .

## AIM'S AND OBJECTIVES

- ☐ To identify new areas within the PVIO sectors, particularly health and social care settings, utilising an established five-step approach, namely: scope, identify, select, recruit and train
- ☐ In discussion with existing providers, extend the professional groups from Nursing to include Occupational Therapy within a Nursing Home setting
- ☐ Monitor the experiences via evaluation tools

## IMPLICATIONS FOR LEARNING AND TEACHING

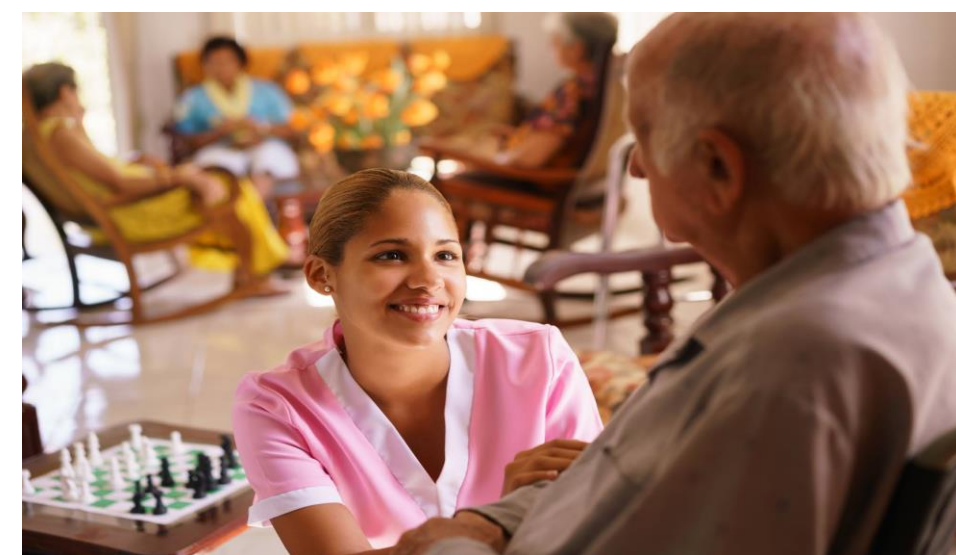
- Person-centred care delivered in a home environment
- Enhancing students' knowledge and understanding from the two disciplines holistic care and the nature of care delivery in a non-acute environment
- Extra support and interactions for residents, families and carers
- Working closely with the MDT and developing clinical expertise
- Management in a community setting where nurses and allied health professionals are autonomous practitioners
- Evaluation through the collection of qualitative and quantitative data of key stakeholders: clinical practice staff, students, and senior managers within the named organizations

## SELECTION AND RECRUITMENT PROCESS

Framework to include specific placement requirements for Pre-registration Nursing and other professional groups such as Occupational Therapy.

Five-step approach: scope, identify, select, recruit and train

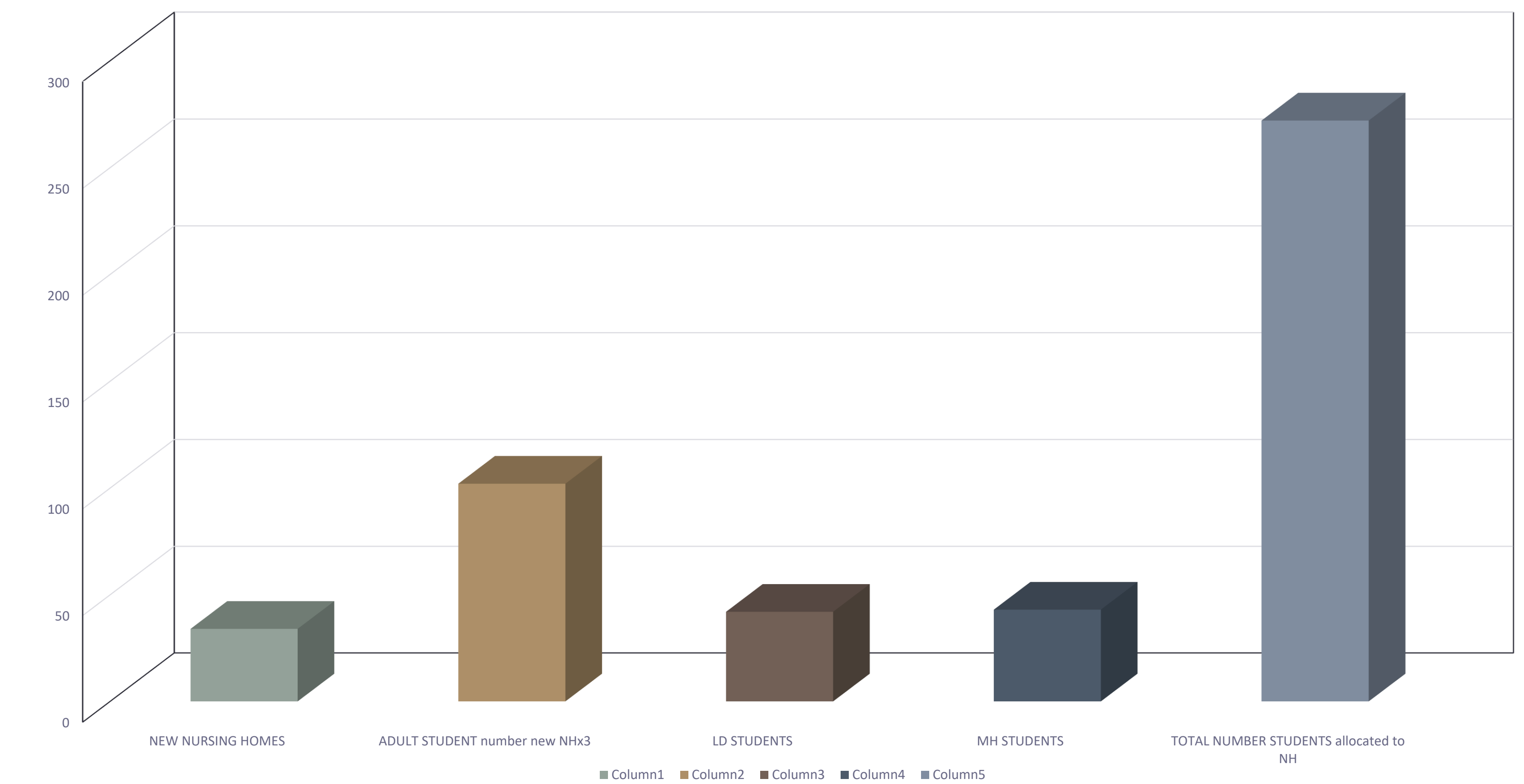
- Key aspects of process
  - CQC rating, registered professionals, proximity to hospitals and transport options
- Engagement and developing professional relationships:
- Educational Audit
- Fact sharing, Q&A , structuring a learning environment
- Placement Agreement Contract
- Supervision and Assessment (NMC 2018 c, HCPC 2023) competencies via online modules and workshops
- Ongoing support of staff and students during allocation and placement



## EMERGING THEMES



## NUMBER OF PRE-REGISTRATION NURSING PLACEMENTS GENERATED SINCE 2020



## REFERENCES

Health Care Professions Council (2023) . The standards of proficiency for occupational therapists . Retrieved 14<sup>th</sup> October 2023 from <https://www.hcpc-uk.org/standards/standards-of-proficiency/occupational-therapists/>

NHS England (2023) NHS Long Term Plan Retrieved 1st August 2023 from <https://www.longtermplan.nhs.uk/online-version/overview-and-summary/>

Nursing and Midwifery Council. (2018a ). Future nurse: Standards of proficiency for registered nurses. Retrieved 1st August 2023 from <https://tinyurl.com/mre499pp>

Nursing and Midwifery Council. (2018b). Realising professionalism: standards for education and training. Part 2: standards for student supervision and assessment. Retrieved 1st August 2023 from <https://www.nmc.org.uk/globalassets/sitedocuments/standards-of-proficiency/standards-framework-for-nursing-and-midwifery-education/education-framework.pdf>

Nursing and Midwifery Council. (2018 c). Future nurse: Standards for Student Supervision and Assessment Retrieved 1st August 2023 from <https://www.nmc.org.uk/standards-for-education-and-training/standards-for-student-supervision-and-assessment/>